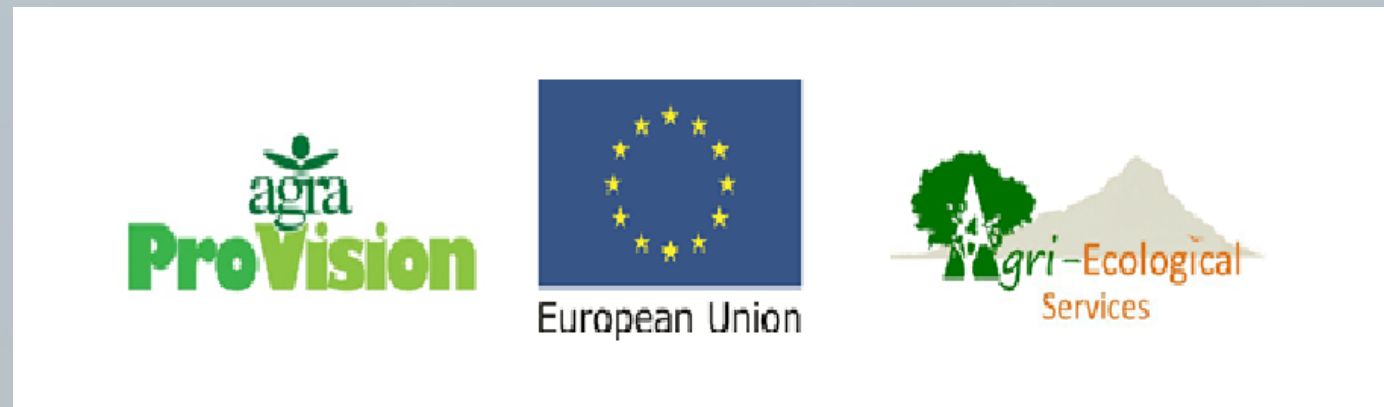


Monitoring Rangelands from Space: Early Warning System for Namibian Livestock Farmers



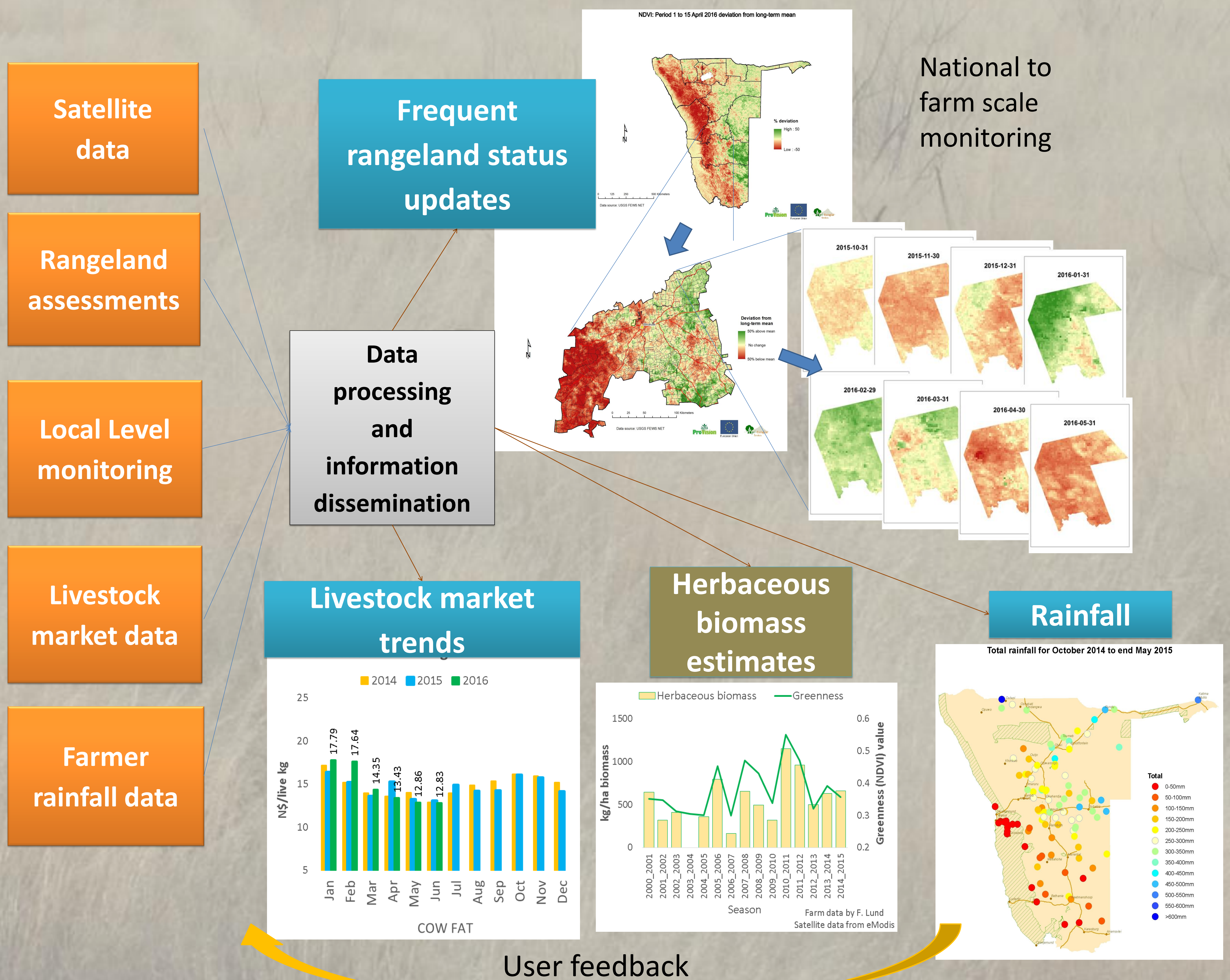
By Cornelis van der Waal¹, Jay Angerer², Bertus Kruger³, Pauline Lindeque³, Trophy Haiduwa³, Angelina Kanduvarisa³ & Frank Witneben³
¹Agri-Ecological Services, Namibia; ²Texas A&M AgriLife Research, USA; ³Agra ProVision, Namibia

Background

Namibia is an arid country characterized by variable rainfall, hence fluctuations in forage production. Poor rangeland-related management decisions result in animal production and asset loss, missed market opportunities and accelerated rangeland degradation such as the loss of desirable, perennial grasses, elevated soil erosion rates and an increase in undesirable plants.

Rationale

Supplying land managers and policy makers with timely, objective information about developing rangeland conditions and livestock markets, results in informed management decisions made, hence increased productivity and decreased degradation rates.



Results

- Web portal for map products since 2001 (www.namibiarangelands.com)
- Email service with 2000+ addresses
- Support to communal conservancies and development projects
- Feedback from farmers and other stakeholders encouraging

A project funded by the Delegation of the European Union to Namibia, Climate Change Adaptation and Mitigation, including Energy

